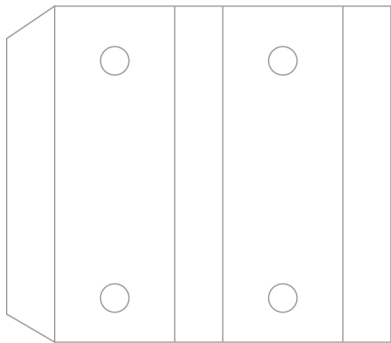
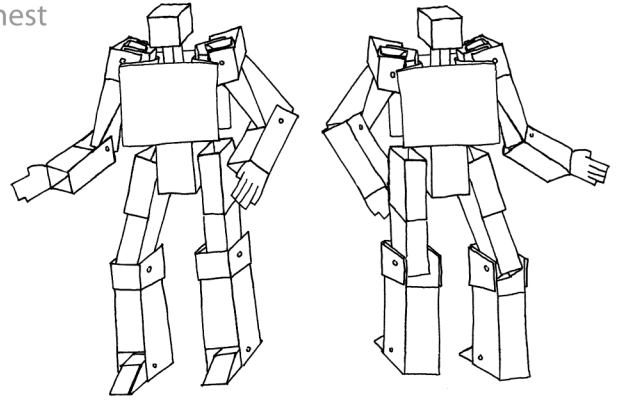
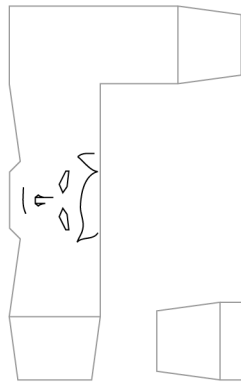


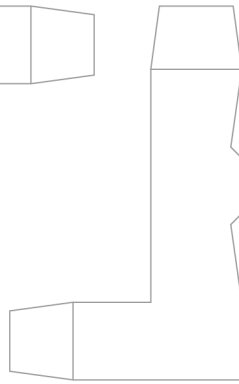
chest



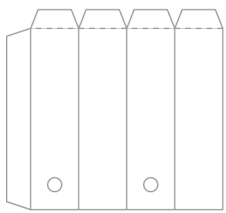
torso



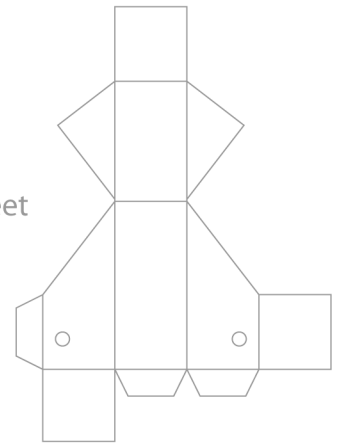
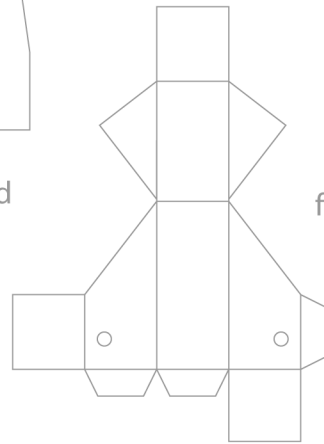
head



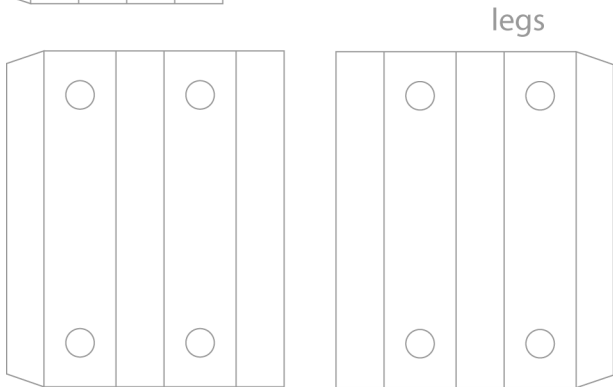
alternate
blank head



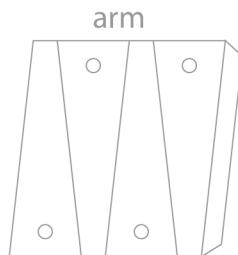
neck



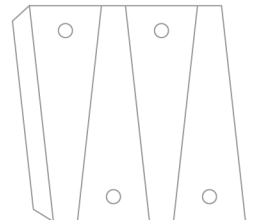
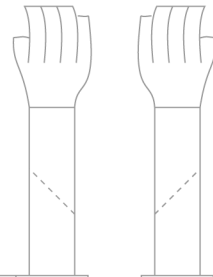
feet



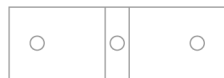
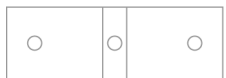
legs



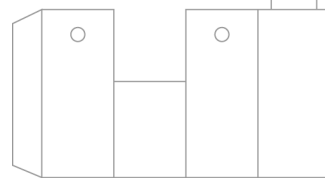
arm



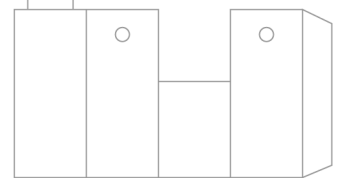
arm



shoulders

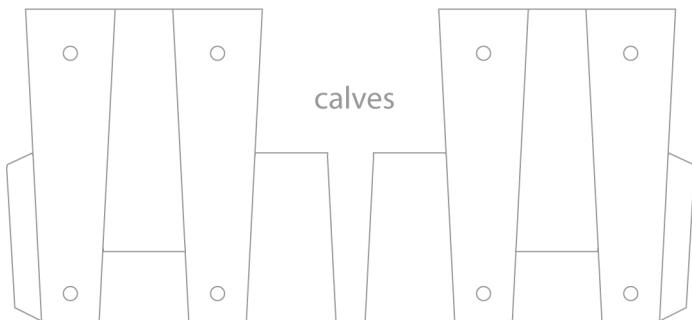


forearms



hips
(optional)

shoulder pads (optional)



calves

knee pads (optional)



**PAPER
ROBOTS
1999.COM**

INSTRUCTIONS:

STEP 1: Print. Designed to fit on standard 8.5 x 11 inch paper and to be printed with any printer. A thick matte paper works best for extra sturdiness. Also, draw on any facial expressions or cool art at this time.

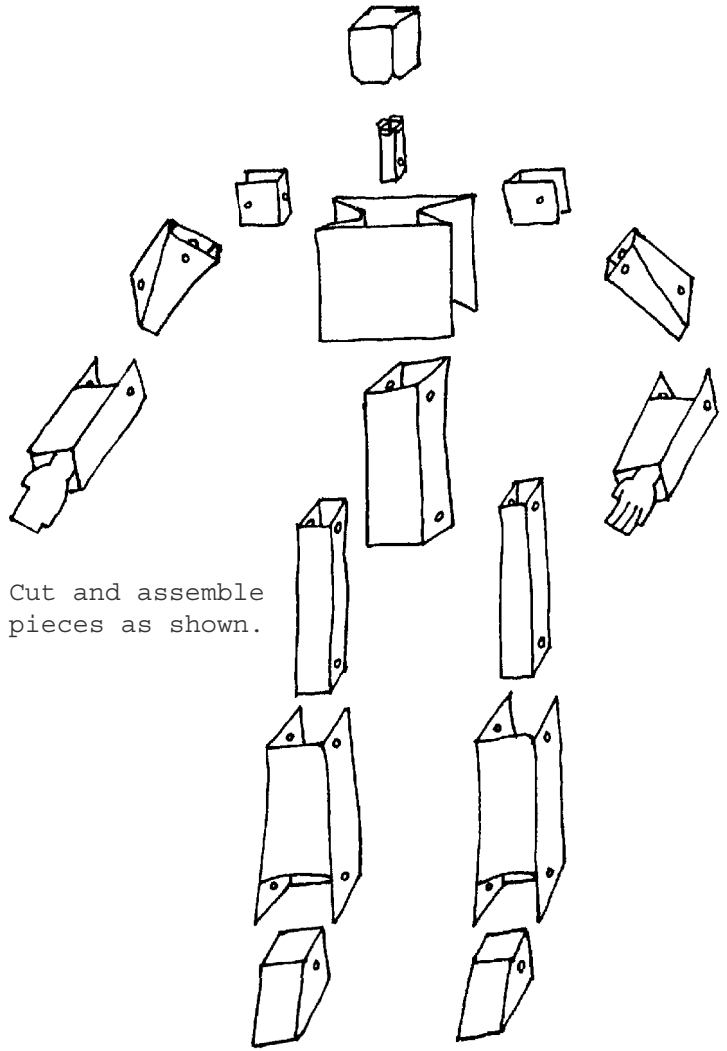
STEP 2: Punch. Using an awl or pen, lay the printed page on a soft surface (such as the carpet) and poke out the marked holes. It is easier to do it now than after the pieces are cut out.

STEP 3: Cut. Using your best pair of scissors and a steady hand, cut out all the limbs and shapes.

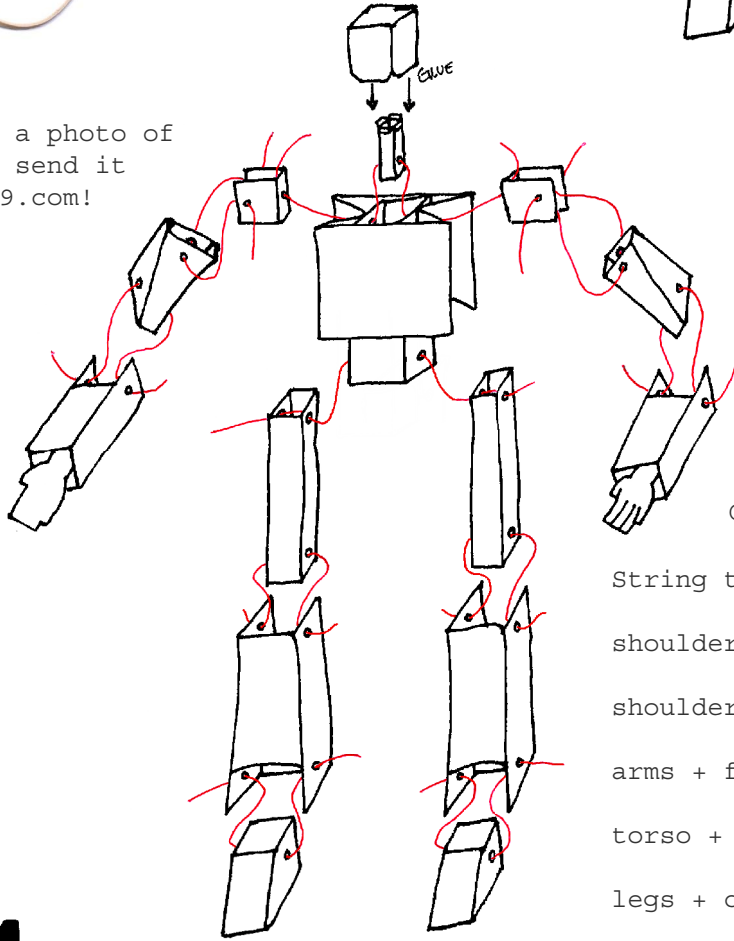
STEP 4: Glue. Fold the pieces along the designated fold lines and add a touch of glue to the white tab areas of each piece.

STEP 5: String. Cut some rubber bands (or wire or fishing line) and use them to string together the various limbs. Be sure to tie a knot on each end so it doesn't slip through the holes you punched earlier. A bent staple makes a great sewing needle for threading.

STEP 6: Enjoy! Now take a photo of your paper creation and send it to us at PaperRobots1999.com!



Cut and assemble pieces as shown.



Slide torso into chest.

Glue head to neck.

- String together:
- shoulders + chest + torso + neck;
 - shoulders + arms;
 - arms + forearms;
 - torso + legs;
 - legs + calves;
 - calves + feet.